

Quick reference guide

# How to use geofencing to boost fleet efficiency

**verizon**  
connect



# What is geofencing?

Geofencing is a virtual perimeter — as large as a state or as small as a loading dock — that is tied to a real-world location. In Reveal, these are called Places.

Many organizations use geofences to:

- Know when a driver enters or exits a site
- Track how long a job takes
- Prove a worker was on a job site
- Spot and reduce unauthorized vehicle or equipment use
- Monitor idle time at sites to reduce fuel costs

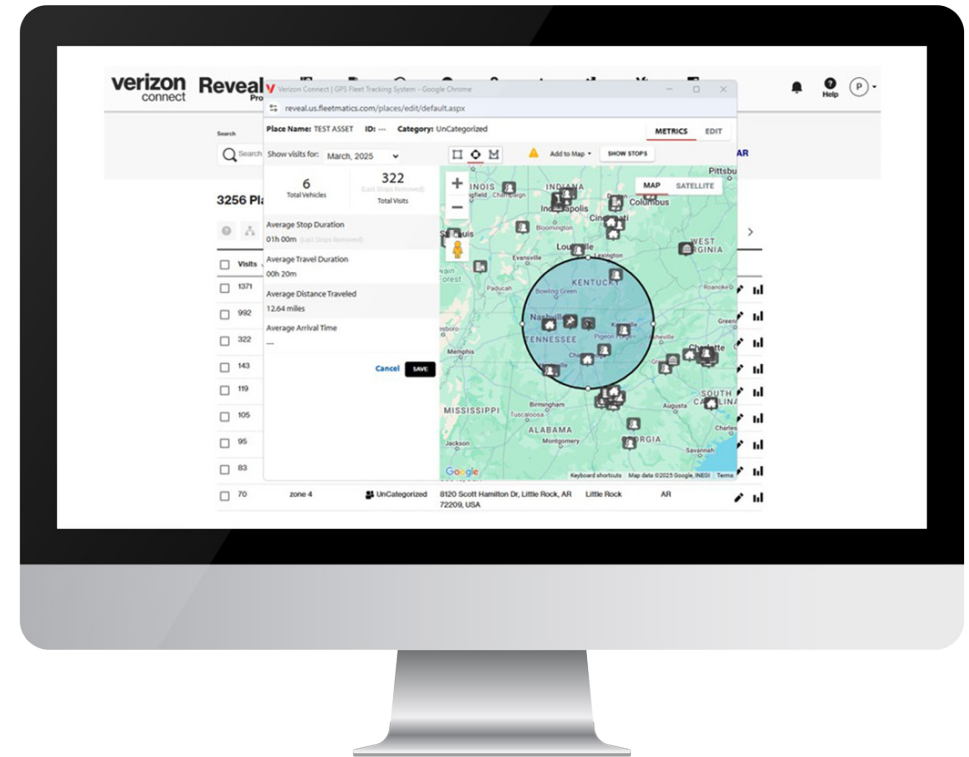
Using geofences or Places effectively can improve a fleet's visibility, productivity and efficiency.



# What can I do with geofencing in Reveal?

Reveal helps you manage location-based activity with easy-to-use tools:

- **Create Places** with customizable geofences
- **Batch upload** multiple addresses at once
- **Set up alerts** when vehicles enter or exit
- **Run geofence reports** to view activity across locations
- **Get smart recommendations** based on vehicle behavior



# What kind of locations should you geofence?

Use geofences to monitor behavior at sites you care about most:

- Customer job sites
- Warehouses or distribution centers
- Fuel stations
- Service or maintenance shops
- Job start and end points
- Construction zones
- State or international borders
- High-risk areas



**Smart suggestions:** Our unique algorithm can help you determine good geofences.

- **Suggested geofences:** Reveal recommends geofences for locations visited 10+ times in 30 days, helping you catch high-traffic areas you may have missed.
- **Geofences to correct:** Reveal flags geofences that need resizing when activity happens just outside the boundary, so you can adjust for better tracking.

# How to access geofences in Reveal

## From Live Map

- Zoom in to view geofences directly on the map and sort them by category.
- Click a geofence icon to view a pop-up with metrics, such as total visits.
- Click “Show stops” to see a table of all visits

## From the Places tab

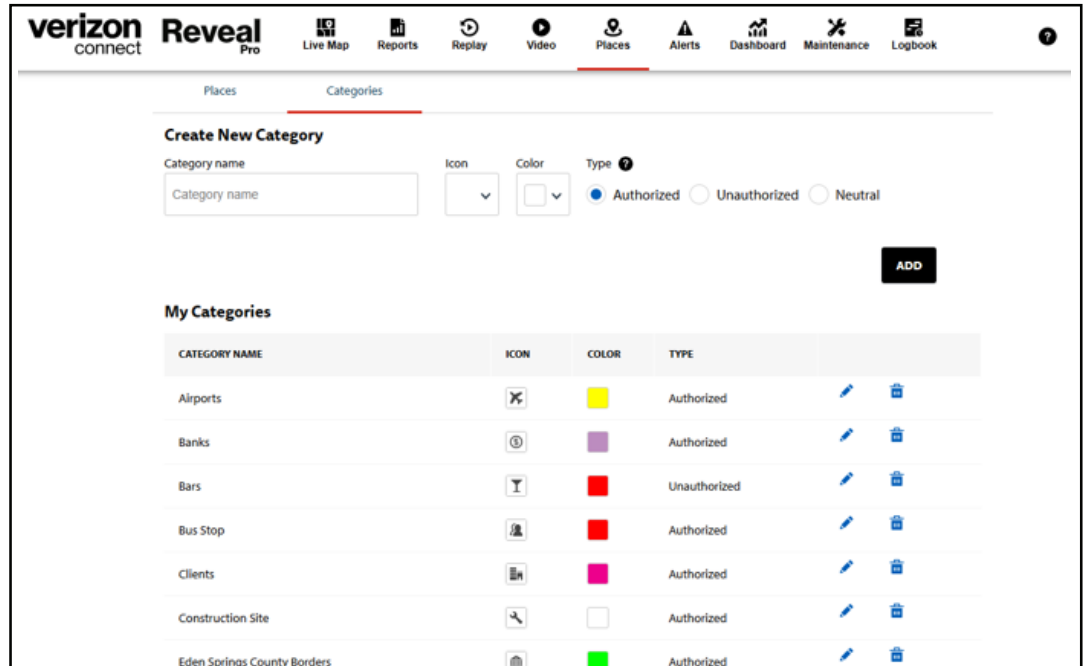
- Click the Places tab in the top navigation bar.
- View all active geofences, suggested geofences and geofences to correct.
- To view metrics, click the bar graph icon on the right side of each geofence entry.



# How to create a category

Assign categories to organize and color-code your Places list. Use categories to group similar locations — like customer drop sites, fuel stations or service centers — for easier sorting and reporting.

- Under the Places tab, click Categories and then add a category.
- Enter category name then choose an icon, color and type (authorized or unauthorized).
- Click Add to save your category



The screenshot displays the Verizon Reveal Pro interface. At the top, there is a navigation bar with the Verizon Connect logo and the 'Reveal Pro' title. The main navigation menu includes icons for Live Map, Reports, Replay, Video, Places (which is currently selected), Alerts, Dashboard, Maintenance, and Logbook. Below the navigation, there are two tabs: 'Places' and 'Categories'. The 'Categories' tab is active, showing a 'Create New Category' form. The form includes a text input for 'Category name', a dropdown for 'Icon', a color selection dropdown for 'Color', and radio buttons for 'Type' (Authorized, Unauthorized, Neutral). An 'ADD' button is located to the right of the form. Below the form is a section titled 'My Categories' which contains a table of existing categories.

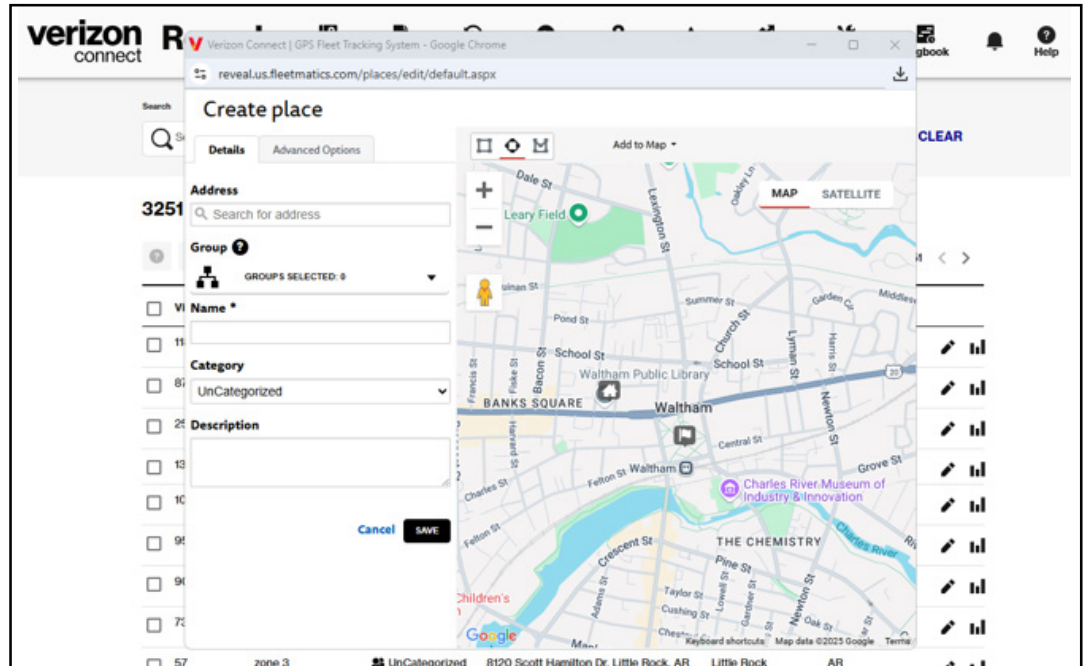
CATEGORY NAME	ICON	COLOR	TYPE		
Airports		Yellow	Authorized		
Banks		Purple	Authorized		
Bars		Red	Unauthorized		
Bus Stop		Red	Authorized		
Clients		Pink	Authorized		
Construction Site		White	Authorized		
Eden Springs County Borders		Green	Authorized		

# How to create a geofence

Mark important locations to track visits and improve visibility.

- In the Places tab, click Add Place.
- Enter the address and give it a name.
- A box will appear over the address. Adjust the geofence shape using the freeform tool or drag it to the right spot.
- Select a category and add an optional description.

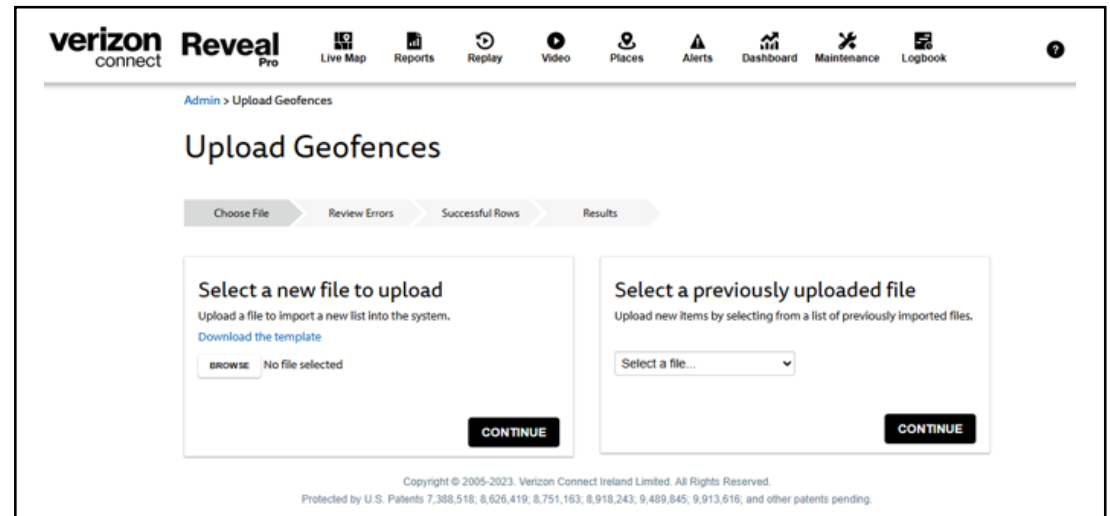
Get more detail: [Create a Place](#)



# How to batch upload geofences

Batch upload lets you create multiple geofences at once using an Excel spreadsheet.

- Go to your profile > Admin > Places and click Upload geofences: Manage batch uploading of geofences.
- Use the premade template to enter your information.
- Upload the file — the system will scan for errors. If errors are found, the system will indicate what they are. Correct them and reupload until cleared.
- Once uploaded, your geofences will appear in the Places tab and can be edited as necessary.



Get more detail: [Upload geofences](#)

# How to set up a geofence alert

Once you've created Places, set up alerts to monitor activity.

- Go to Alerts and click Create alert.
- Enter a name for your alert
- Choose the geofence you want to track. You can narrow down the assets you want to track within the geofence (entire fleet, powered or non-powered equipment)
- Choose the behavior to monitor such as time entered or exited, time stopped inside, has not entered by a set time, has been in the geofence longer than a set time.
- Set the time range for when the alert should trigger.
- Select recipients and choose how you want alerts delivered (email, SMS, etc.).



**Get more detail:** [Set up a geofence alert](#)

# How to run a geofence report

Use geofence reports to track visits, duration and idle time at key locations. Reports give you a bird's eye view of vehicle activity across all monitored locations.

- Click the Reports tab in the top navigation bar.
- Select Geofence from the report options.
- Choose the date range and specific geofences to include.
- View entry and exit times, visit duration and idle time.

The screenshot shows the Verizon Reveal Pro interface for a Geofence Report. The top navigation bar includes Home, Geofence (selected), and CLOSE ALL REPORTS. Below the navigation bar are icons for EDIT, REFRESH, PRINT, SCHEDULE, EMAIL, and RENAME. A FILTER BY dropdown menu is set to Show All, with CSV and PDF export options.

The main content area displays the Geofence Report for the date range 03/24/2025 - 03/24/2025. The report title is "Geofence Report" and it was created on 03/24/2025 at 1:54 PM. The report type is "Geofence Report".

Report Totals for: 03/24/2025 - 03/24/2025

Average Idle Time: 12m	Average Visits per Place: 1	Most Visited: 10011 Commerce Ave
Unique visits: 1	Average Duration: 1h 00m	

Q121\_254

GEOFENCE ▲	DATE	ENTRY TIME	EXIT TIME	EVENT TYPE	DURATION	IDLE DURATION
10011 Commerce Ave	03/23/2025	10:49 PM	11:49 PM	Journey, Idle, Stop	1h 00m 06s	12m 00s
Summary:				Visits : 1	1h 00m 06s	12m 00s

Get more detail: [Run a geofence report](#)

# Geofencing in action: St. John's County, Florida

St. John's County uses Reveal geofencing to manage 1,200 assets across departments like road and bridge and utilities.

How they use it:

- Fuel tracking: Geofenced fuel stations to track which vehicles fuel up where and when, aiding fuel key systems.
- Preventive maintenance: Geofenced drop-off zones to monitor adherence to regular maintenance schedules and the vehicle time spent with technicians.
- Project oversight: Placed geofences around mowing zones to track crew time, equipment use and coverage. This helps plan staffing and resources, and estimate how long it will take to complete the county's monthly mowing schedule.
- Daily reports: Uses geofence reports to increase accountability and improve resource planning.

**Read more case studies:**

- [Lincoln Hill Retirement](#)
- [J&M Contracting](#)

Watch the [full webinar here.](#)